

W8115

Network Cabinet Speaker

Product Datasheet



KEY FEATURES

- Built-in 15W amplifier, 80Hz to 18KHz frequency range and 100dB max sound pressure level.
- Standard PoE (IEEE 802.3af/at) support or External power supply(DC 24V 2A).
- Supports 48K OPUS high-quality audio encoding.
- Compatible with SIP phone system.
- Compatible with VMS via ONVIF.
- Supports three SIP accounts.
- Support HTTP API for alarm in transmit.
- Can be connected to external 8Ω 15W passive sub-speaker.

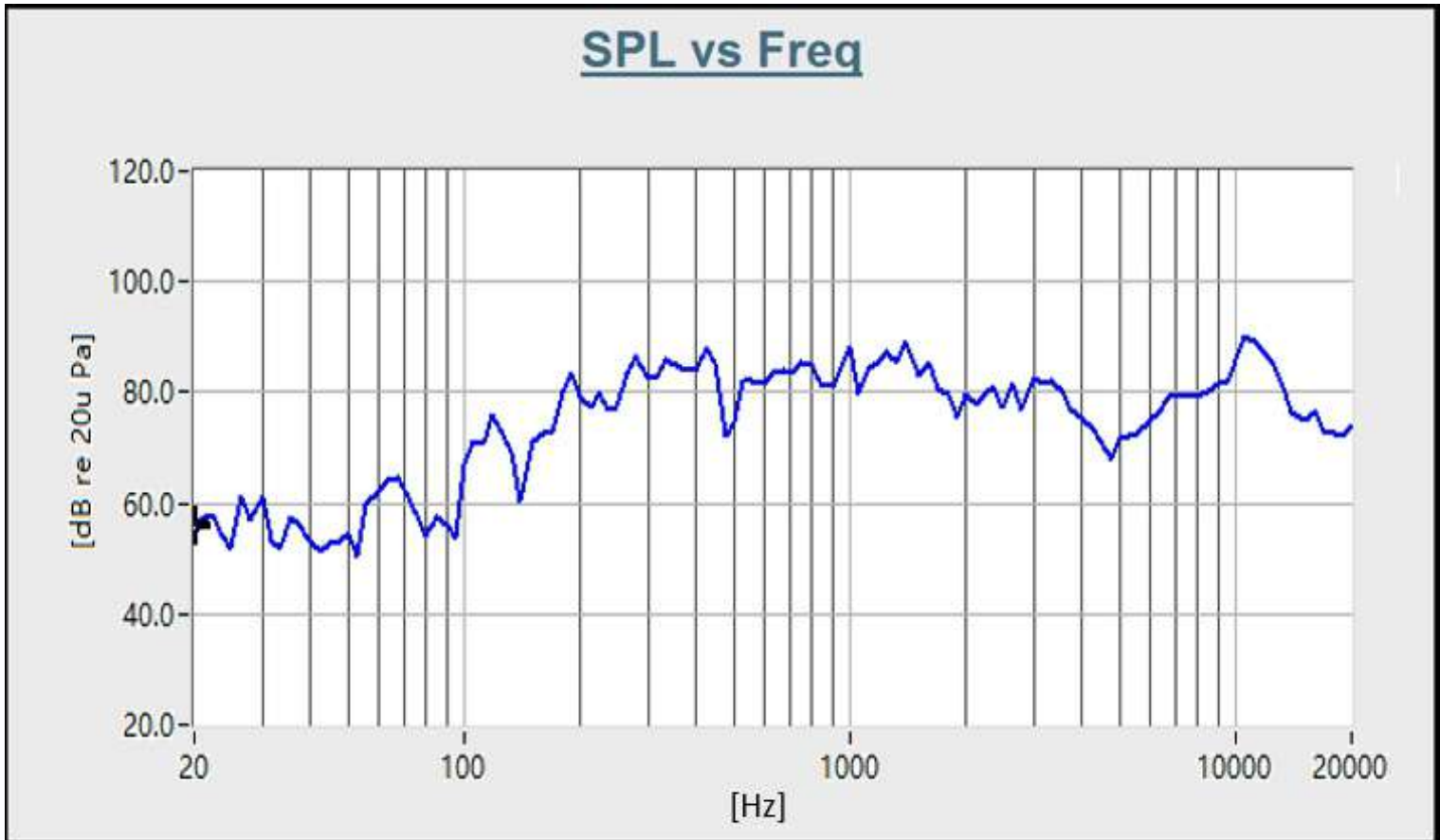
Specifications

Speaker	
Speaker component	1x4.5"mid-bass +1x 2" high frequency driver unit
Sensitivity	90dB/1m/1W
Max sound pressure level	100dB
Amplifier	Class D Amplifier
Rated power	DC: 8Ω 15W or PoE: af-8Ω 8W / at-8Ω 15W
Frequency range	80Hz~18KHz
Coverage Pattern	90°H 50°V, 30m ²
Acoustics	Mono
Microphone	
Microphone	Electret condenser microphone
Directionality	Omni-directional
Installation method	Built-in
Sensitivity	-36±2dB
SNR	65dB
Maximum input sound pressure	110 dB (THD ≤ 3%)
Maximum pickup distance	Up to 10m in a 50dB noise environment

Specifications

Audio	
Audio codecs	G.722, G.711 A-law, G.711 U-law, Opus
Audio streaming	MP3 sampling rate 8 – 48KHz, bit rate 64 – 320kbps, Mono or Stereo
Interface	
Interface	1x RJ45POE 1x 10-pin 3.5mm Phoenix terminal 1x DC Female interface(5.5*2.1)
Network	
Interface	10/100Mbps, support PoE IEEE 802.3af/at
Protocols	SIP(RFC3261), HTTP, TCP/IP, SSL, DNS, SNTP, NTP, RTSP, RTP, RTCP, TCP, UDP, MQTT, ICMP, DHCP, ARP, SSH
Administration	
Configuration	Web interface or auto provisioning server
Provisioning method	MQTT IoT Protocol
Mechanical Properties	
Memory	128MB RAM, 256MB Flash
Power input	PoE IEEE802.3af/at standard adaptive or DC 24V-2A
Casing	ABS
Color	White
Weight	1.6KG
Dimension	260 x 200 x 100 mm (10.24 x 7.87 x 3.94 in)
Mounting method	Wall mounted
Environmental	
Installation environment	Indoor
Operating temperature	-20°C- 50°C (-4°F - 122°F)
Storage temperature	-40°C- 70°C (-40°F - 158°F)
Humidity	10% - 95% RH Non-condensing
Approvals	
Approvals	EN 55032:2015, EN 55035:2017, EN 61000-3-2:2014, EN 61000-3-3:2013, EN 62368-1:2014+A11:2017, FCC Pat 15B

Frequency Response Curve



Map	
Notes	<hr/> <hr/> <hr/> <hr/>

The above specifications may be updated in the future without prior notice. All hardware/software/physical features should be based on the final shipped products.